



Valve Position Monitor for Intrinsically Safe Applications.*

AccuTrak™ 5000

Intrinsically Safe

A Universal Standard for Intrinsically Safe Position Monitoring

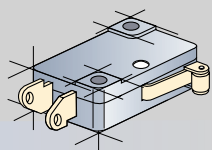
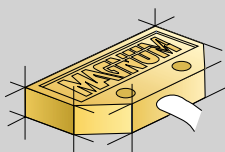
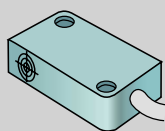
Westlock Controls, through a technical alliance with the world's premier sensor manufacturer, Pepperl+Fuchs, has jointly engineered an Intrinsically Safe position monitor that incorporates into a single unit the primary design features of both companies. By combining field proven components, cost-effective design elements, international approval agency certifications and adherence to NAMUR specifications, Westlock and Pepperl + Fuchs have created an Intrinsically Safe position monitor engineered to become an industry standard.

The new AccuTrak 5000 is a highly corrosion resistant FM/CSA approved valve position monitor having the capability to house a

wide range of sensors, including the P+F Namur sensor. The P+F Namur sensor NJ2-V3-N meets all requirements of the EN 60947-5-6 (NAMUR) standard and carries approval certifications from PTB, CENELEC, FM and CSA. In addition, the AccuTrak 5000 is also available with Magnum proximity sensors and mechanical Micro Switches for Intrinsically Safe "simple apparatus" applications.



Standard Sensor Options



ATTENTION

Magnum and Proximity Sensors Only

For low power ($P \leq 240$ mW) and/or high DI card capacitance ($C \geq 0.01$ mfd.) applications refer to the Reference Section Bulletin No. WD-13.02.

*Westlock 5000 Series valve position monitors are FM and CSA approved General Purpose enclosures. For use in Intrinsically Safe applications, the Accutrak 5000 must be used in conjunction with an approved Intrinsically Safe barrier.

P+F, NJ2-V3-N

Proximity Type (Solid State), Intrinsically Safe, PTB, FM, CSA, CE

| | |
|----------------------------|---|
| Sensing Range | 2mm |
| Electrical Version | D.C. Voltage 2 wire in accordance with EN 60947-5-6 (NAMUR) |
| Hysteresis | 3-15% (5% typical) |
| Switching Frequency | 1 KHz |
| Input Voltage Range | 5-25 VDC |
| Output/Current Consumption | Cam Trigger Present: ≤ 1 mA Cam Trigger Absent: ≥ 3 mA (15 mA max) |
| Operating Temp. | -10°C to +100°C |

MAGNUM™ Proximity Sensors w/ Low Power Contacts

UL, CSA "Simple Apparatus", Hermetically Sealed SPST or SPDT, Rhodium Contacts

| | |
|----------------------------|-----------------|
| Voltage | 24 VDC Nominal |
| Nominal Contact Resistance | $\leq .10$ ohm |
| Operating Current Range | 0.5mA to 1A |
| Power Range | 10mW to 25W |
| Temperature Range | -40°F to +185°F |

Mechanical V3 w/ Gold Plated Contacts

UL, CSA "Simple Apparatus"; SPDT

| VDC | Contact Rating |
|-----|------------------|
| 12 | 100 mA Resistive |
| 24 | 100 mA Resistive |

AccuTrak™ 5000

AREA CLASSIFICATIONS

NEMA 4, 4x
Class I, Groups A, B, C, D
Class II, Groups E, F, G,
Divisions 1 & 2

ENCLOSURE

Conduit Entries 2 - 1/2" NPT
 Terminal Strip 8 contacts standard
 16 contact available

5044 & 5046

MATERIALS OF CONSTRUCTION

| | |
|---------------|------------------|
| Housing/Cover | Engineered Resin |
| Shaft | Stainless Steel |
| Screws | Stainless Steel |
| Beacon | Copolyester |

5004

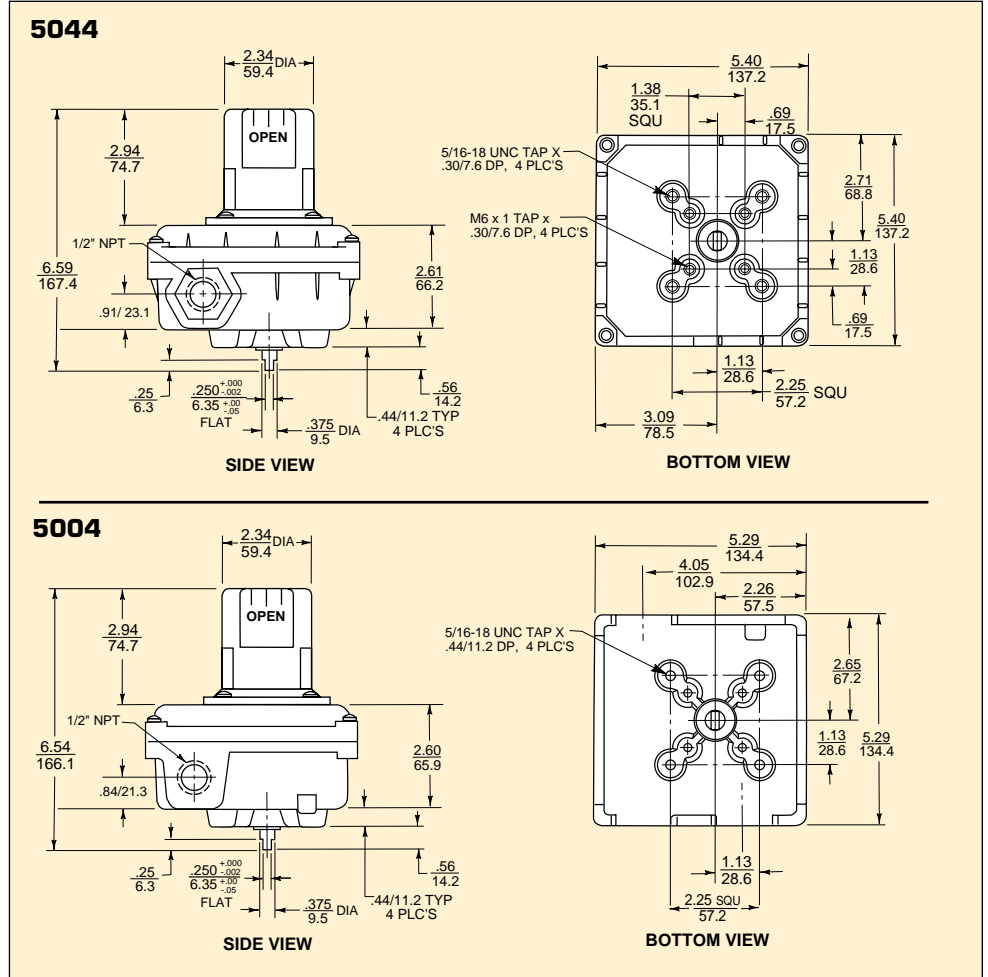
MATERIALS OF CONSTRUCTION

| | |
|---------------|-------------------|
| Housing/Cover | Die Cast Aluminum |
| Shaft | Stainless Steel |
| Screws | Stainless Steel |
| Beacon | Copolyester |



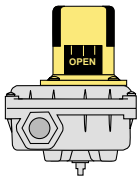

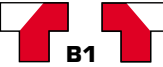
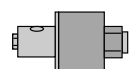

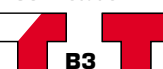
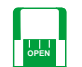
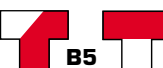

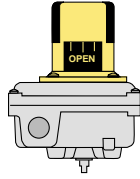




APPROVALS / CERTIFICATION

FM (Factory Mutual Research)
CSA (Canadian Standards Association)

DIMENSIONS (inches/mm)



ORDERING GUIDE

| ENCLOSURE | BEACON™ | 3-WAY BEACON™ | SENSORS | TRANSMITTERS | SOLENOID |
|--|---|---|--|--------------------|---|
| 5044 Engineered Resin NEMA 4, 4X    | STANDARD (Black & Yellow) BY  | 90° Rotation  B1 | MAGNUM (SPDT) M12 MAGNUM (SPDT) M10 Mech. (SPST) w/ Gold Plated Contacts M9 P+F M8 | Consult Factory | To Be Specified By Customer  |
| | ANSI YELLOW (Inherently Hazardous) AY  | 90° Rotation  B3 | | | |
| | ANSI GREEN (Liquid-Low Hazard) AG  | 90° Rotation  B5 | | | |
| 5004 Aluminum NEMA 4, 4X   | ANSI BLUE (Gas-Low Hazard) AB  | 180° Rotation  B7 | | | |
| | ANSI RED (Fire Quenching) AR  | 180° Rotation  B9 | | | |

For Eliminator configuration on 5000 series enclosures, prefix part numbers with the letter "E"
 NOTE: The 5000 series may be utilized with any I.S certified solenoid valve.