

- Specifically designed for Severe Offshore Environments
- ATEX 94/9/EC
- M.T.B.F., Lambda and SIL Data (Available upon request)
- Easy Installation, Repair and Replacement
- 316 Stainless Steel construction
- 3 Ports, 2 Positions, Normally Closed
- 690 bar Max Operating Pressure
- Ambient Temperature Range -50°C to +60°C
- Block Before Bleed Function
- Leak tight
- 15 litres/min



Certification Options Available



© 2008 Midland-ACS
A subsidiary of ITT Corporation
Re-issued : 07/2008



ACCURACY AND COMPLETENESS OF INFORMATION

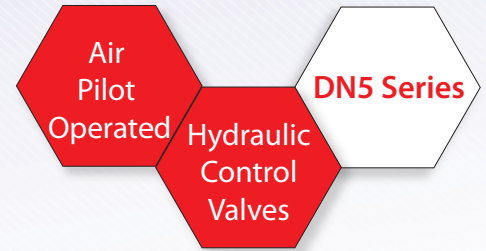
All information in this literature regarding products and services provided by Midland-ACS is subject to change without prior notice. Reasonable efforts are taken to ensure the accuracy and integrity of all information provided here, but Midland-ACS is not responsible for misprints, out-of-date information, or errors. Midland-ACS makes no warranty, express or implied, or assumes any legal liability or responsibility for the accuracy or completeness of any information contained in this literature



ITT
Engineered for life

United Kingdom Headquarters
Midland-ACS
Patrick Gregory Road,
Wolverhampton, WV11 3DZ
United Kingdom
Tel: +44 (0)1902 305678
Fax: +44 (0)1902 305676
Email: midland-acs@itt.com

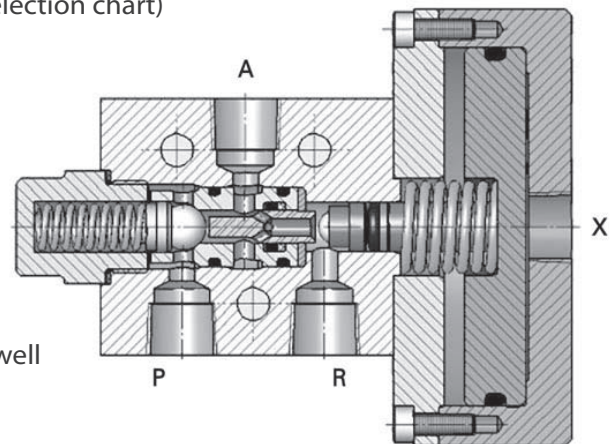
North American Headquarters
Midland-ACS North America
P.O. Box 422, Ontario
L3M 4H8, Canada
Tel: (905) 309-1834
Fax: (905) 309-1835
Mobile: (905) 515-2405
Email: rjthake@aol.com



General Description

The DN5 High Pressure Hydraulic Interface Valve provides a reliable, high quality, cost effective solution for Wellhead Controls. The rigid piston operator and ball seated design, ensures a leak tight shut off and positive control. The DN5 Interface Valve can also be supplied with a variety of operators, for a wide range of pressures and ambient temperatures (see selection chart)

The DN5 High Pressure Hydraulic Interface Valve can be individually in-line mounted or subplate/multi-station manifold mounted with integral cartridge check, flow control, and pressure relief valves, to provide a compact, cost effective, weight and space saving solution, for multi-well panels.



Materials of construction

- 316L Stainless Steel body
- Wetted parts : stainless steel
- Seals: Rubber (viton/PTFE)

Ports NPT

- Hydraulic Port Connections 1/4" NPTF
- Air Pilot Port Connection 1/4" NPTF

Nominal Flow Rate

- 15 LPM @ 10 bar DP
- Cv = 0.33

Filtration

- Recommended 10 micron absolute

Ingress protection

- IP66/NEMA 4X

Ambient temperature range

- Standard: -20°C to +60°C
- Low Temp: -50°C to +60°C

Maximum operating pressure

- 690 bar (10,000 psi)

Maximum Air Pilot Pressure

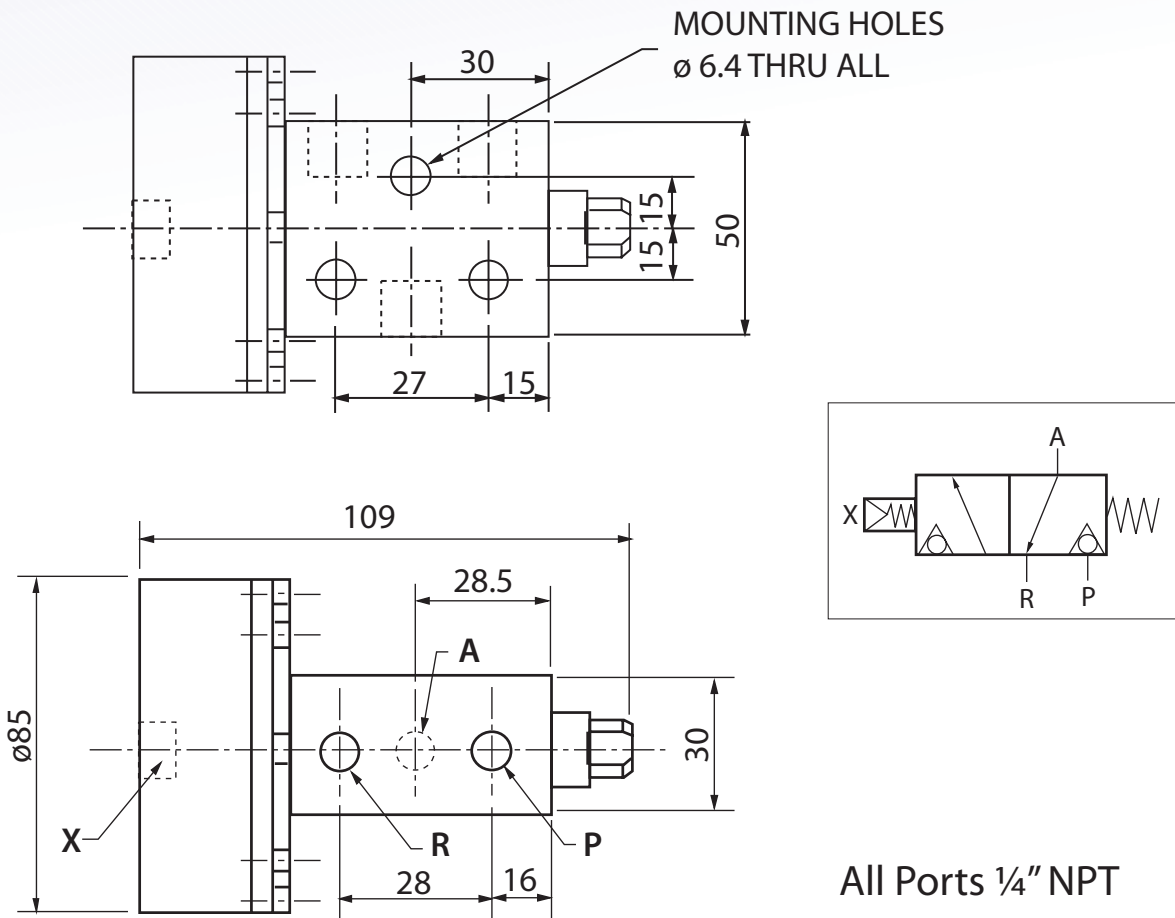
- 12 bar (174 psi)

Minimum Air Pilot Pressure

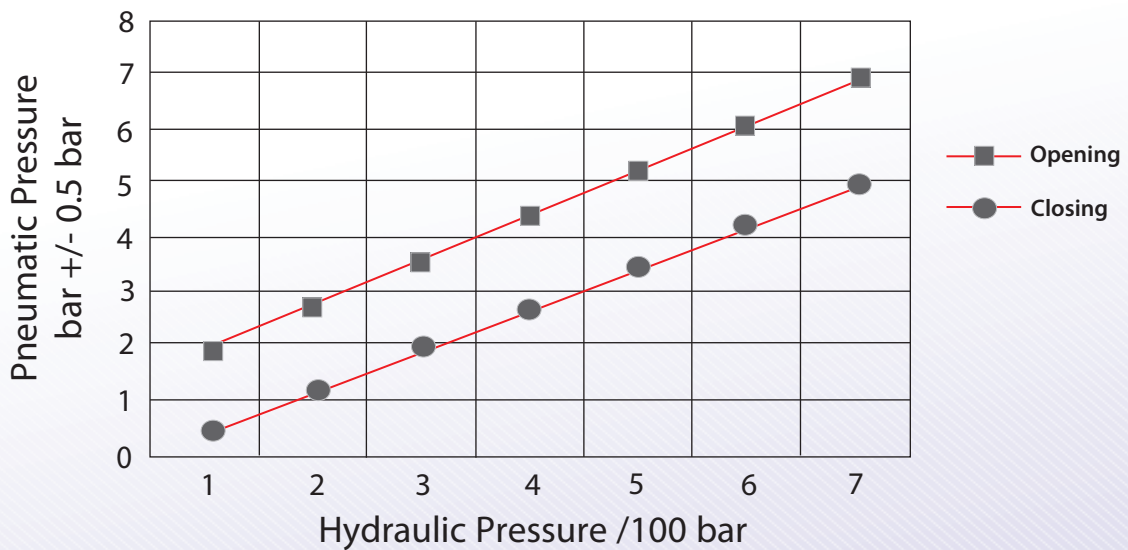
- 2.0 bar (44 psi)

Fluid Media

- Suitable for use with Mineral Oil, Synthetic Oil, and Water Glycol Fluids



Operating pressure for Interface valve



MIDLAND- ACS VALVE CODING SYSTEM

| | | | | | | | | | | | | | | | | |
|--|---|---|---|---|---|---|---|---|---|---|---|---|---|---|---|---------|
| | | | | | | | | | | | DN05 - 15l/min | Valve Orifice Size & Nominal Flowrates (Water Glycol @ 10 Bar AP) | | | | |
| | | | | | | | | | | | 1 = 100 2 = 210 3 = 345 5 = 690 | Max Operating Pressure (Bar) | | | | |
| | | | | | | | | | | | 2 3 | No. of Ports | | | | |
| | | | | | | | | | | | 2 | No. of Positions | | | | |
| | | | | | | | | | | | 1 - N/C 2 - N/O | Function | | | | |
| | | | | | | | | | | | B = block before bleed | Block Before Bleed | | | | |
| | | | | | | | | | | | 1 = Gases 4 = Oil & Water Glycol | Operating Medium | | | | |
| | | | | | | | | | | | 1 = Nitrile 2 = Viton 3 = Flurosilicone (Low Temp) 4 = Deirin (gases) 5 = Kalrez | Seals | | | | |
| <p>A = No Operator (Valve Only)</p> <p>N = Low pressure operator hydraulic/gases, 2 to 12 bar</p> <p>P = Medium pressure operator hydraulic/gases, 25 to 420 bar</p> <p>R = High pressure operator hydraulic/gases, 100 to 690 bar</p> <p>Z = Special Operator</p> <p>K4 = Explosion proof, IECEX/CSA</p> <p>K5 = Explosion proof, ATEX</p> <p>K6 = Explosion proof, Class 1, Div 2, Groups A & B Class 1, Div 1, Groups C & D</p> | | | | | | | | | | | Operator | | | | | |
| | | | | | | | | | | | 0 = No Voltage B = 24VDC | Voltage | | | | |
| | | | | | | | | | | | O = Manual Over-Ride (Spring Return) A = Autoreset (Spring Return) | Additional Features | | | | |
| | | | | | | | | | | | 0 = Valve only (w/out subplate) 1 = Subplate Mounted 2 = Body Ported | Interface | | | | |
| | | | | | | | | | | | 0 = valve only 1 = 1/4" | Port Size | | | | |
| | | | | | | | | | | | 0 = Valve Only 1 = NPT 5 = Special | Thread | | | | |
| | | | | | | | | | | | 0 = No Extras 2 = position indicator proximity sensor 3 = External pilot supply 4 = External pilot drain | Special Features | | | | |
| DN05 | - | 5 | 3 | 2 | 1 | B | 4 | 2 | N | 0 | A | 2 | 1 | 1 | 0 | Example |