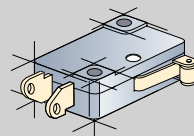
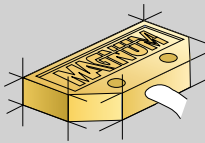
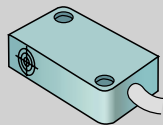




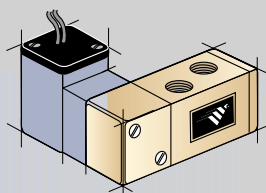
**Low Power Control Monitor for use in Intrinsically Safe Hazardous Areas**

**Standard Sensor Options**



ATTENTION

Magnum and Proximity Sensors Only  
For low power ( $P \leq 240$  mW) and/or high DI card capacitance ( $C \geq 0.01$  mfd.) applications refer to the Reference Section Bulletin No. WD-13.02.



**Quantum™**

**Intrinsically Safe**

Intrinsically safe Quantum™ units meet class I, Groups A, B, C, & D and Class II, Groups E, F, & G, Division 1 and 2 requirements. Intrinsically safe Falcon™ solenoid valves operate through approved I.S. barriers at 12 VDC, 33 mA, and are available in a wide variety of body materials and Cv. ratings. P+F NJ2-V3-N sensors are internationally approved for intrinsically safe applications as are both Magnum™ and mechanical sensors under their classification as "simple apparatus". Housed within a high impact engineered resin or aluminum enclosure and capable of operating in any position, Falcon solenoid valves elevate the integration of sensors and controls to a new level.



**I.S. APPROVALS**  
FM - Class I, Division 1, Groups A - G  
ATEX- EEx ia IIC T6

**P+F, NJ2-V3-N Proximity Type (Solid State)**

Intrinsically Safe, FM, CSA, PTB, ATEX

Sensing Range	2mm
Electrical Version	D.C. Voltage 2 wire in accordance with EN 60947-5-6 (NAMUR)
Hysteresis	3-15% (5% typical)
Switching Frequency	1 KHz
Input Voltage Range	5-25 VDC
Output/Current Consumption	Cam Trigger Present: $\leq 1$ mA Cam Trigger Absent: $\geq 3$ mA (15 mA max)
Operating Temp.	-10°C to +100°C

**MAGNUM™ Proximity Sensor w/ Low Power Contacts**

UL, CSA "Simple Apparatus", Hermetically Sealed, SPST or SPDT, Rhodium Contacts

Voltage	24 VDC Nominal
Nominal Contact Resistance	$\leq .10$ ohm
Operating Current Range	.5 mA to 1A
Power Range	10 mW to 25 W
Temperature Range	-40°F to 185°F

**Mechanical V3 w/ Gold Contacts** UL, CSA "Simple Apparatus"

VDC	Contact Rating
12	100 mA Resistive
24	100 mA Resistive

**COIL POWER SUPPLY**

	COIL
Operating Voltage	24 VDC
Wattage	0.48 Watts*
Operating Current	33 mA*
Coil Resistance	380 Ohms

\*When operated through approved I.S. barrier.

# Quantum™

## Intrinsically Safe

### AREA CLASSIFICATIONS

NEMA 4, 4x  
Class I, Groups A, B, C, D,  
Class II, Groups E, F, G, Div. 1 & 2

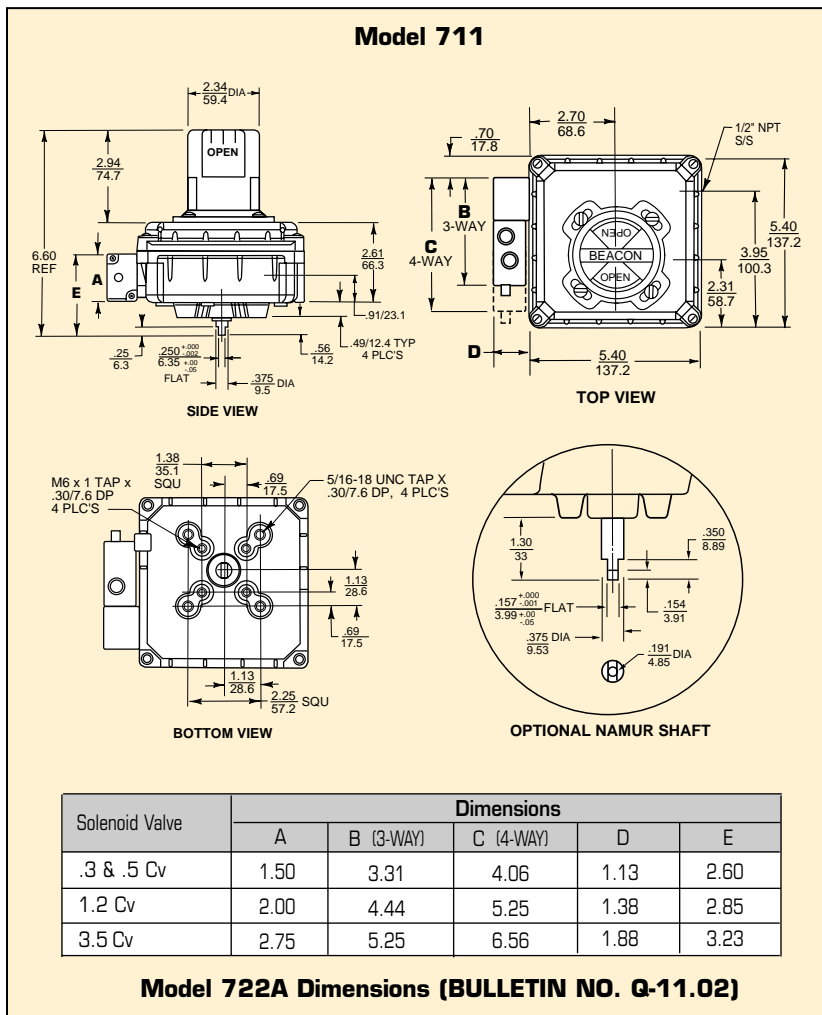
### ORDERING GUIDE



(FALCON™ SOLENOID)

COILS	CV	Body	3-Way	4-Way	
<b>FIO</b> 24 VDC 0.48 watts  NOTE: I.S. valves must be operated through approved I.S. barriers.  Entity Parameters V max=35V I max=300mA Capacitance=0 Inductance=0	.5 Cv	Brass	2200	2600	
		Alum.	3200	3600	
		303 S.S.	4200	4600	
		316 S.S.	5200	5600	
	1.2 Cv	Brass	2300	2700	
		Alum.	3300	3700	
		303 SS	4300	4700	
		316 S.S.	5300	5700	
	3.5 Cv	Alum.	3400	3800	
		303 S.S. *	4400	4800	
	<b>OPTIONAL FEATURES</b> (See BULLETIN NO. Q-18.02)				

### DIMENSIONS (inches/mm)



Note: Operating pressure: 45-120psi.

\* Available on 722A Series Only.

### ORDERING GUIDE

QUANTUM™ LP	BEACON™	3-WAY BEACON™	SENSOR	SOLENOID (Falcon™)
<b>711</b> Engineered Resin  	<b>STANDARD</b> (Black & Yellow) <b>BY</b> 	<b>90° Rotation B1</b> 	Magnum (Rhodium SPDT) <b>2M12</b>  Magnum (Rhodium SPDT) <b>2M10</b>  Mech. (SPDT) w/ Gold Plated Contacts <b>2M9</b>  P+F (NJ2-V3-N) <b>2M8</b>	Use above listing for ordering solenoid  
	<b>ANSI GREEN</b> (Liquid-Low Hazard) <b>AG</b> 	<b>90° Rotation B3</b> 		
<b>ANSI BLUE</b> (Gas-Low Hazard) <b>AB</b> 	<b>90° Rotation B5</b> 			
<b>ANSI RED</b> (Fire Quenching) <b>AR</b> 	<b>180° Rotation B7</b> 			
	<b>180° Rotation B9</b> 			
<b>722A</b> Aluminum  				

NOTE: Model 711 Max. 3 Sensors, Model 722A Max. 3 Sensors

Ordering Example: Quantum LP Intrinsically Safe, resin enclosure with standard black & yellow Beacon, 2 SPST Magnum Sensors and Falcon 24 VDC/.48 watts, .5 Cv, brass, 3-Way solenoid valve. 711-BY-2M10-FIO2200

Westlock reserves the right to change product designs and specifications without notice, and is not responsible for errors and omissions.